



Welcome to Stenton's Virtual Garden Party

The live event will begin at 5:10 PM.
Please enjoy this brief history of the Stenton Garden while you wait.



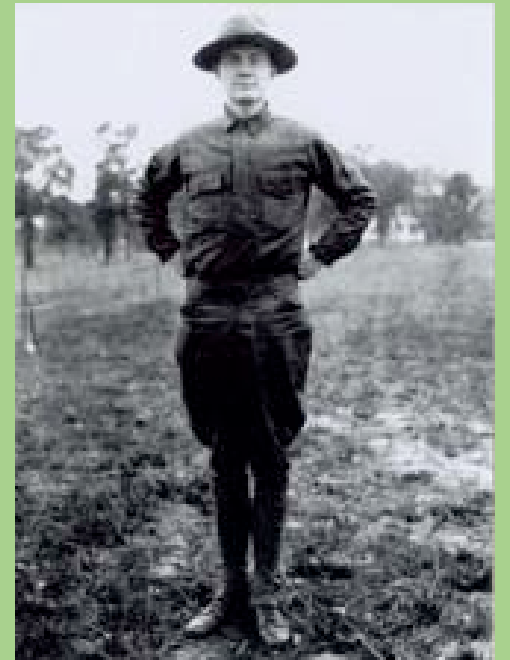
The Dames & Stenton



The NSCDA/PA became the steward of Stenton in 1899

In 1909, the NSCDA/PA formed a garden committee and appointed Logan descendant Letitia Ellicott Carpenter Wright (top right) as Chairman.

In 1911, landscape architect John Caspar Wister (bottom right) completed an overall plan for the Stenton grounds. It included driveways and pathways, a “colonial” garden composed of rectilinear beds, and an extensive border of trees and shrubs around the perimeter of the site.



WAYNE STATION, PHILA.

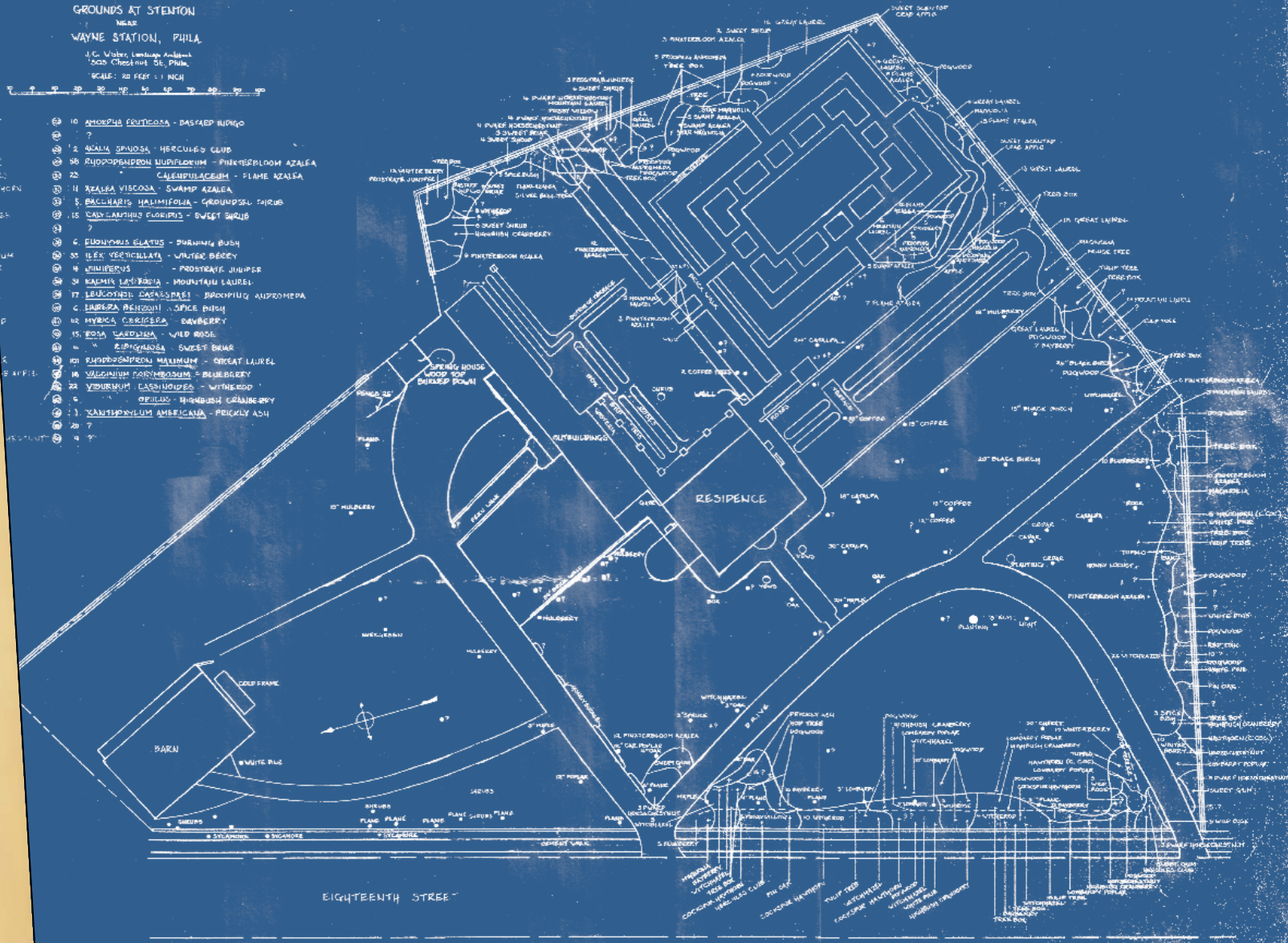
J. C. Weber, Landscape Architect
5005 Chestnut St., Phila.
SCALE: 20 FEET = 1 INCH



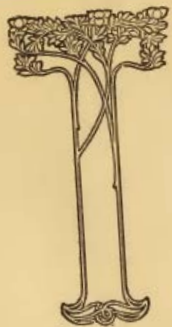
PLANTING LIST

- 2. *AGNOSTUS HIERACIOLATUS* - HIERACIESTUUT
- 3. *ENTIMAPHUS VAGABUNDUS* - FLEUKE TEEG
- 4. *EPIDRUM BULBOSUM* - BOOGJOP
- 5. *STRATIOTES CACUMINA* - WINTERHOUT (C. CO.)
- 6. " *CORDATA* - (C. CO.)
- 7. " *DESSOLATA* - COCKSACK HARTENP.
- 8. *HEPATICIS TANGUTICA* - HONEY LOCUST
- 9. *MAHURA TETRAEPALUS* - SILVER BELL TREE
- 10. *MAHURATIS VIRGINIALIS* - WITCHHAZEL
- 11. *MAHURA GEORGIENSIS* - TREE BOX
- 12. *MAHURATIS SYRIACICUS* - SWEET GUM
- 13. *MAHURATIS MULIPLEX* - TULIP TREE
- 14. *MAHURUS QUINQUE* - MAGNOLIA
- 15. " *STENATA* - STAR MAGNOLIA
- 16. *MAHURA SYRIACA* - TULIP
- 17. *CORDONPRONI ARBOREUM* - SWEETWIP

10. AMORPHO FRUTICOSA - BASTARD HUNDO
11. ?
12. ALNUS INCANA - WHITEBARK
13. ALNUS SPINOSA - HURON'S CLUB
14. ALNUS SPINOSA - WHITEBARK - PINKERBLOOM AZALEA
15. ?
16. ?
17. ?
18. ?
19. ?
20. ?
21. ?
22. ?
23. ?
24. ?
25. ?
26. ?
27. ?
28. ?
29. ?
30. ?
31. ?
32. ?
33. ?
34. ?
35. ?
36. ?
37. ?
38. ?
39. ?
40. ?
41. ?
42. ?
43. ?
44. ?
45. ?
46. ?
47. ?
48. ?
49. ?
50. ?
51. ?
52. ?
53. ?
54. ?
55. ?
56. ?
57. ?
58. ?
59. ?
60. ?
61. ?
62. ?
63. ?
64. ?
65. ?
66. ?
67. ?
68. ?
69. ?
70. ?
71. ?
72. ?
73. ?
74. ?
75. ?
76. ?
77. ?
78. ?
79. ?
80. ?
81. ?
82. ?
83. ?
84. ?
85. ?
86. ?
87. ?
88. ?
89. ?
90. ?
91. ?
92. ?
93. ?
94. ?
95. ?
96. ?
97. ?
98. ?
99. ?
100. ?



Colonial Garden at Stenton
Described in Old Letters



By LETITIA E. WRIGHT

Letitia Wright's Research & John Caspar Wister's Plan

The Stenton Garden Committee, Letitia Wright & John Caspar Wister

From the Scrapbook, 1911



The Garden Under Construction, 1911



Photo by Charles Pancost, copyright 1911



June 24th.

Box-cuttings from Mt. Vernon arrived.

The Stenton Garden Committee, Letitia Wright & John Caspar Wister

From the Scrapbook, 1911

Letitia Wright

Hand-sketched Plan 4-12-1911

*Plants and notes indicated around perimeter
border, clock-wise starting at entry path:*

Crimson to salmon

Pink and white to blues

Blue, whites, pale yellow to yellow

Orange and _____? _____?

Reds, scarlet, ce _____? Maroon

Reds, scarlet, ce _____? maroon

Yellow, orange & brown

Pale yellow, white & purples

To

Foxglove,

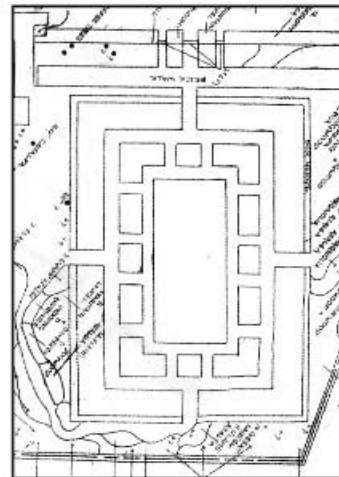
_____?

Blues and pink

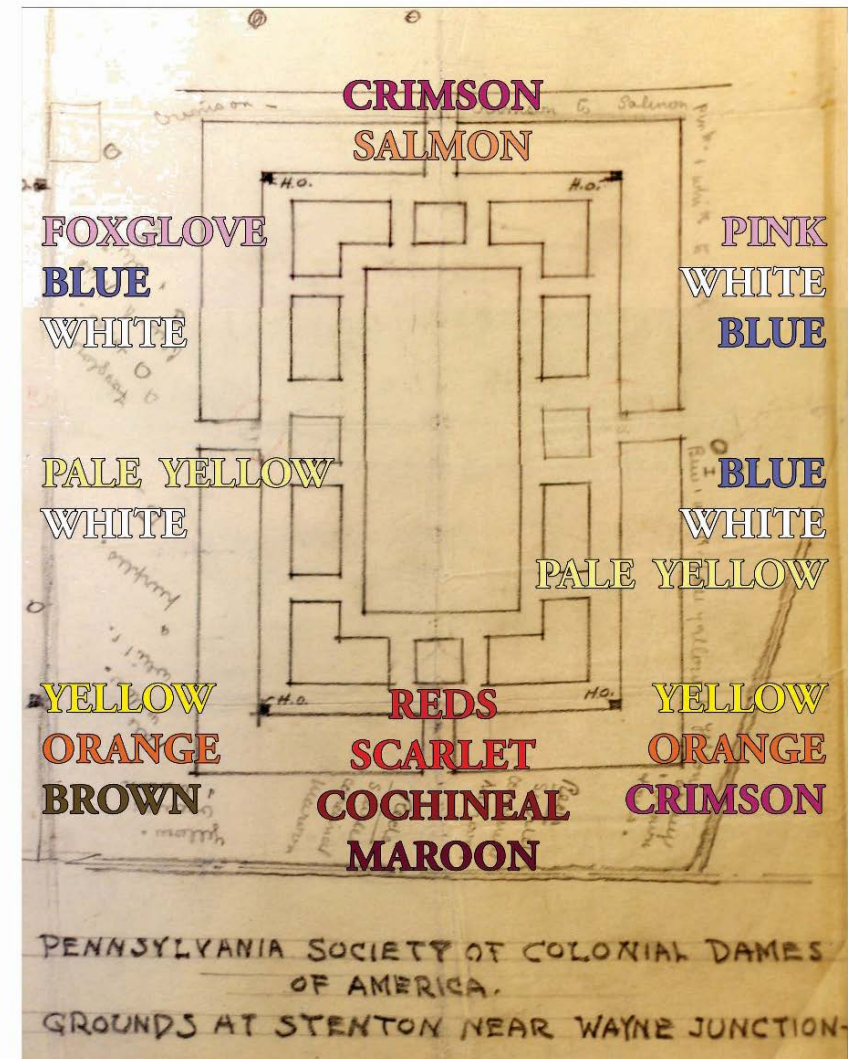
& white

To

Crimson



Wister Plan



Letitia Wright Color Scheme for the Colonial Revival Garden at Stenton, annotated by LDCP



Stenton Garden 1912.



may



may



may



may



may



may



may



May 9th.

Mrs. Wright - Mrs. Martin & Miss Fox - planting
African marigolds - yellow - faded beards rose - bigonias - clematis
day-lilies - other flowers etc. Mrs. Wright brought & planted
yellow crocuses - The men are still working - but expect to
finish to-morrow.



Photographs.
taken May 9th.



May 11th.

Mrs. Wright now Martin & Miss Fox - here planting

E. P. Fox

Order No. Record No.
27898

ANDORRA NURSERIES

WM. WARNER HARPER, Proprietor

CHESTNUT HILL, PHILADELPHIA

Terms: CASH
Make all Remittances Payable to
ANDORRA NURSERIES

Billed
MAY 31 1912
RHODODENDRONS,
TREES, SHRUBS and VINES
WOOD ASHES

Sold to *Mrs. Wm. Redwood Wright,*
Logan
Pa.

4/8/12 Ordered by
Mr. John C. Wister.

Shipped in Via:— Wagon to Stenton House.

		Net
2	Aesculus	8/10 ft 5.20
3	Chionanthus	2/3 ft .96
5	Crataegus cordata	3/4 ft 5.00
4	" Crus-Galli	
2	Gleditsia triacanthos	
3	Halesia	
10	Hamamelis	
3	Liquidambar	
2	Magnolia Stellata	
2	Oxydendrum arboreum	
6	Pinus strobus	
6	Lombardy Poplars	
2	Ptelia trifoliata	
25	Aesculus parviflora	
3	Amorpha fruticosa	
6	Aralia spinosa	
30	Azalea lutea	

Amount Carried Forward



*Colonial Dames of America
to John C. Wister*

1911

Nov 15
+ Dec 2 6 hours @ \$.80 4.80
Blue Prints 1.53

6.53

1912

June 10
to March 26 45 hours @ .80 36.00

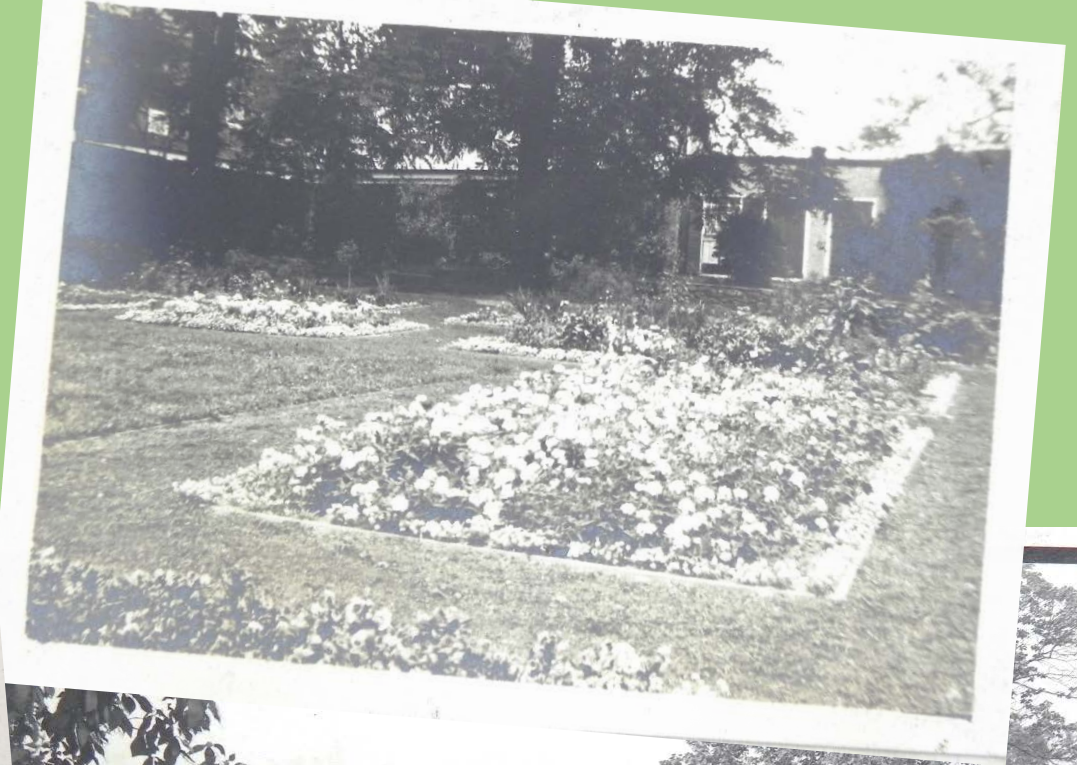
Total 42.33

Shrubbery Planting
as per Contract 75.00

\$ 117.33

Aug 22, 1912.
John C. Wister

Pages from Letitia Wright's Stenton Garden Scrapbook, 1910-1913



Images from Letitia Wright's Stenton
Garden Scrapbook, 1910-1913

The Garden Club of America at Stenton

The first annual meeting was held at Stenton on May 1, 1913.



Mrs. Wm. Redwood Wright and
Mrs. J. Willis Martin present their
Compliments to

Miss Logan

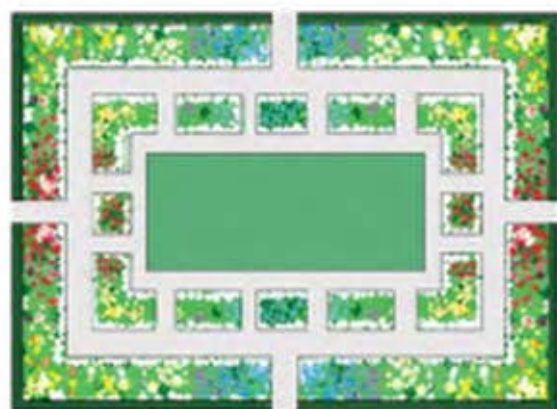
and request the Favour of *her*
Company to Breakfast at Stenton on
May Day at Noontide to meet the
Representatives of the Affiliated
Garden Clubs of America.

An answer, if you please
Logan Post Office, Philadelphia

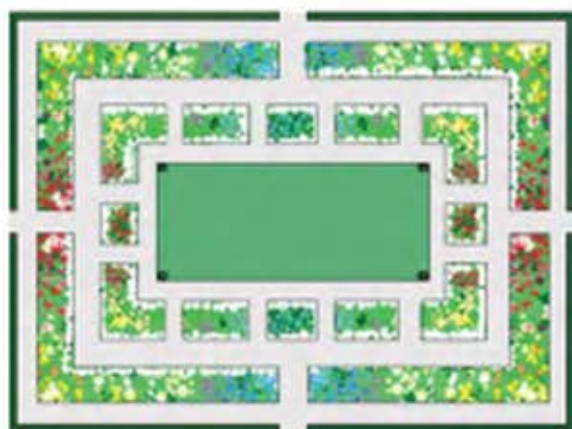


Lantern slide, hand-colored, from the Garden Club of America collection at the Smithsonian, c. 1914-1949.





1911 Wister Proposal



1912 As-built
(L.W. Scrapbook Photos)



1922 Existing
(T-Square)



1986 Existing
(Ball & Johnson)



1988-89
After Boxwood Transplanting
(Ball & Johnson)



2012 Existing Conditions
(2012 Survey; LDCP)

2009

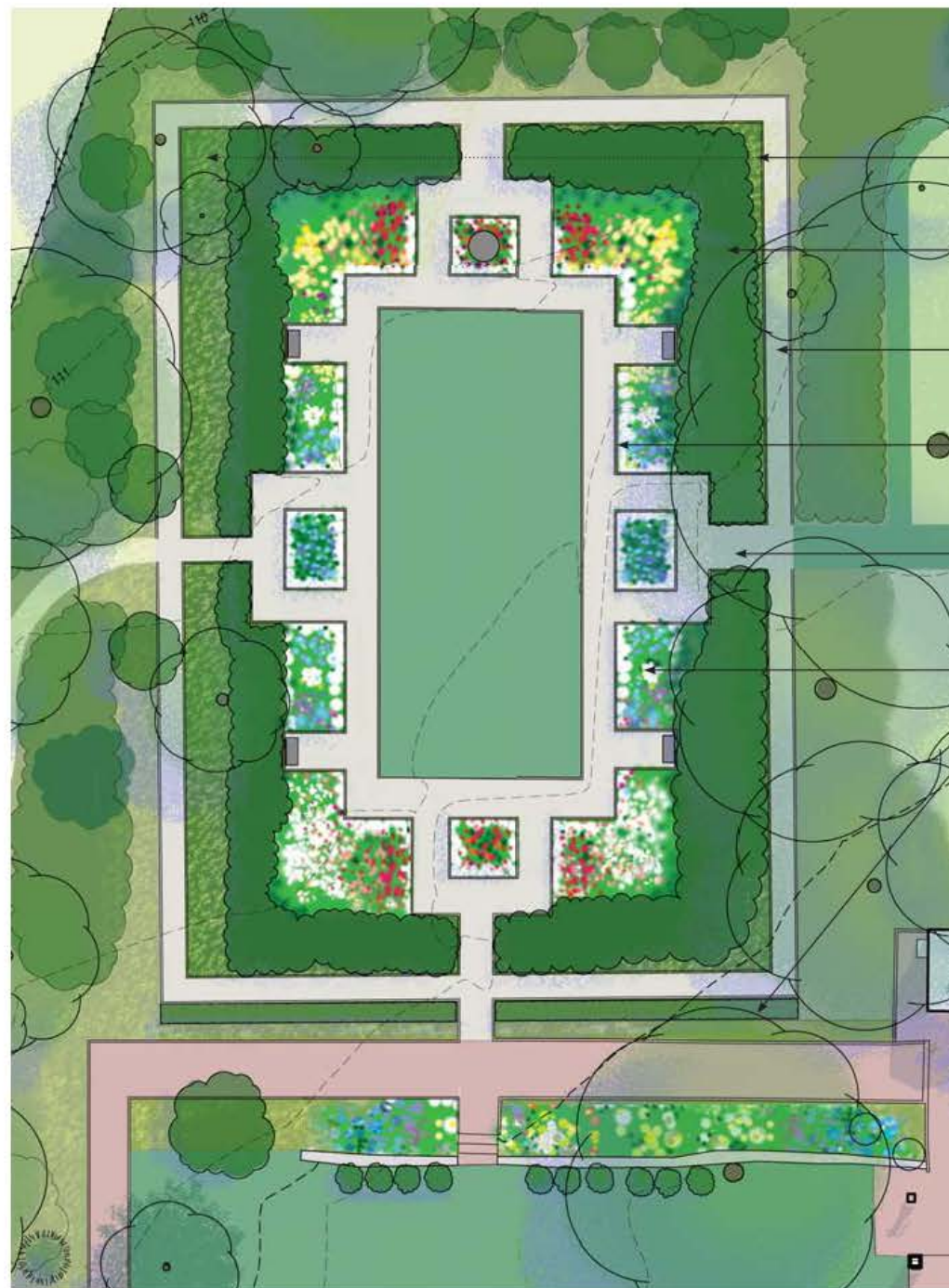
Pre-“Rejuvenation” of Letitia Wright’s color scheme



2010

Garden & Grounds in bloom





- Outer parterres: Low-maintenance, native & historically significant plants
- Historic boxwood plants pruned for balance and structure; new plants added to complete hedge
- Perimeter path (1912 plan) restored
- Wood bed edging to be replaced
- Axial entrances restored
- Interior parterres: Letitia Wright's "rainbow" color scheme; historically significant plants
- New boxwood propagated from historic plants in location of original hedge

The Colonial Revival Garden - Into the Next Century

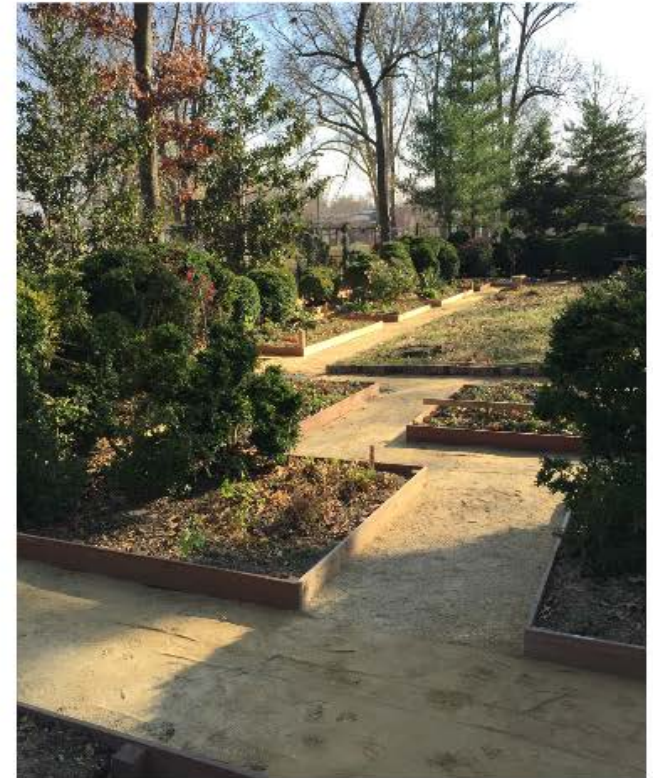
The restoration will take a conservative approach that recognizes the historical scale and configuration of the garden while also preserving significant boxwoods *in situ* and planning for a realistic level of maintenance.

The existing, mature and healthy boxwood plants will remain in place. These boxwoods will be pruned over a period of years to improve their structure and to establish the geometry of the garden. Other boxwood plants on the property—specifically those at the end of the lawn terrace—will be transplanted to fill the gaps.

Most of the existing herbaceous plants will be preserved and incorporated into the new garden. The outer beds—outside of the boxwoods—will be planted with lower maintenance groundcovers, including perhaps native plants that are horticulturally suited.

The path surface will remain as gravel. Provision will be made for appropriate irrigation.

Construction, 2015



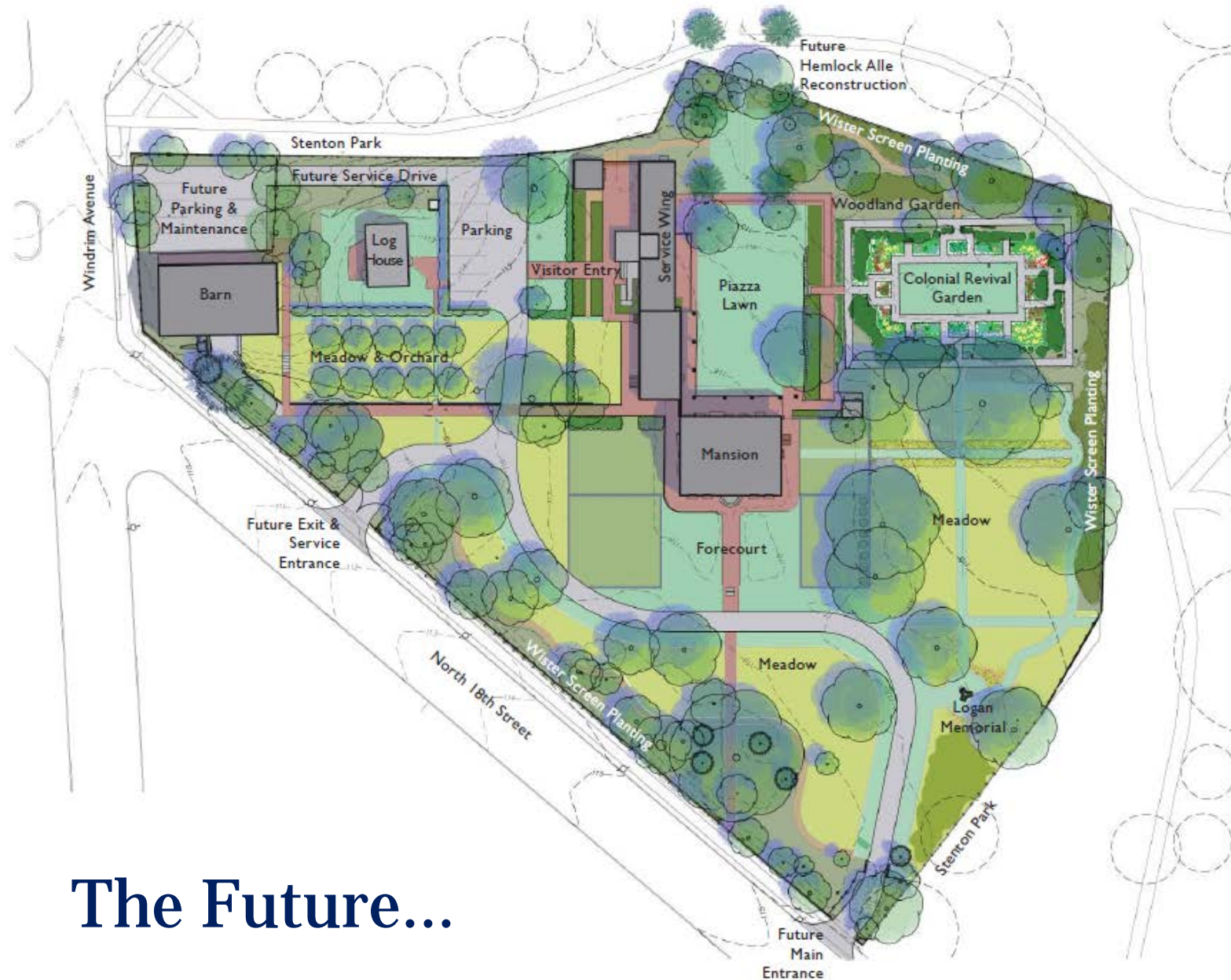
This year in bloom



STENTON

Landscape Rejuvenation Project

Preservation Master Plan 2018



The Future...

